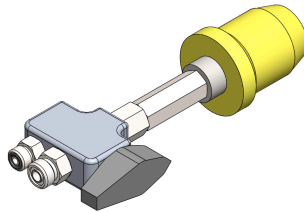


SNO-MOTION SOLUTIONS

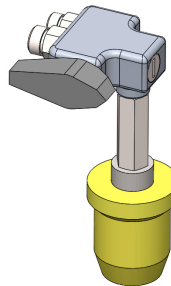
Hydraulic • Pneumatic • Electro-Mechanical • Alternative Fuel • Controls • Sales • Training • Engineering • System Integration • Design • Installation

Fueling Valve

The FV system is a compact cost effective fueling valve designed for ergonomic comfort and space efficiency. The compact design is less cumbersome than many of the traditional fueling valve systems.



FVI In-Line Fueling Valve



FVL 90° Fueling Valve

Model Code

FV [1][2][3][4][5][6]
(Example FVIOOP)

[1]	[2]	[3]	[4]
Configuration	Inlet Port size and configuration	Vent Port size and configuration	Outlet Port
I – in-Line	O – MORFS	O – MORFS	S – Female SAE
L – 90°	S – Female SAE	S – Female SAE	*P – Female Pipe
	P – Female Pipe	P – Female Pipe	
	J – Male JIC	J – Male JIC	

*In-Line Only