

SNO-MOTION SOLUTIONS

Hydraulic • Pneumatic • Electro-Mechanical • Alternative Fuel • Controls • Sales • Training • Engineering • System Integration • Design • Installation

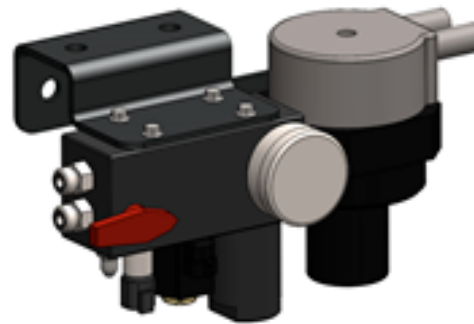
High Pressure Manifold System

The HPM system incorporates all of the features and components required by NFPA 52 for the high pressure portion of the system. With this system an installer can hook up only 3 lines to this manifold. This will greatly reduce installation time and reduce cost.

- [1] Inlet from the fill receptacle
- [2] Inlet from the cylinder
- [3] Outlet to the fuel rail

This is a modular system that can include any or all of the following components:

- Secondary Check Valve for the fill port
- Quarter Turn shut off with vent
- High pressure Solenoid Lock Off
- High Pressure Transducer
- Pressure Gauge
- Coalescing Filter
- Regulator of choice



Model Code

HPM - [1][2][3][4][5][6]
(Example HPM-WLTGO6)

[1]	[2]	[3]	[4]	[5]	[6]
Regulator Supplied	Regulator	Lock Off	Transducer	Pressure Gage	Thread Size
O – Regulator not Supplied	O – Omit no Regulator	O - Omit (no Lock Off)	O – Omit (no Transducer)	O – Omit (no Gage)	O4 -4 O-Ring Face Seal
W – Regulator Supplied	B - Blackstone	L – Lock Off	T - Transducer	G - Gage	O6 --6 O-Ring Face Seal
	G – GFI				C4 -4 Compression
	I – ITT				C6 -6 Compression
	P - Parker				F4 - ¼" Female Pipe Thd
	R - Rotarex				

SNO-MOTION SOLUTIONS

Hydraulic • Pneumatic • Electro-Mechanical • Alternative Fuel • Controls • Sales • Training • Engineering • System Integration • Design • Installation

PO Box 520091 • Salt Lake City, Utah 84106
3699 w. 1987 S. • Salt Lake City, Utah 84104
(801) 583-2938 • Fax(385) 227-8092
www.sno-motion.com